

## SLEEVELESS SAFETY SMOCK

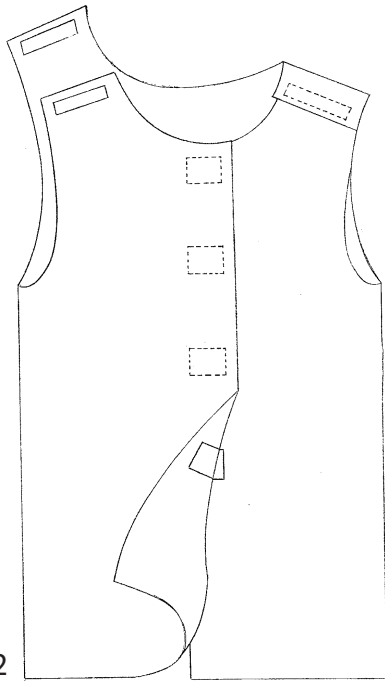
The only sleeveless safety smock on the market manufactured with patent-pending ComfortGuard material. The added warmth and softness of a brushed cotton interior, combined with the durability and strength of a high denier polyester exterior provides the most comfortable safety option for individuals in crisis.

INCREASED COMFORT = SUBSTANTIALLY REDUCED COMPLAINTS!

### ORDERING & INFORMATION

**1-800-506-0992**

CG-002



#### TESTING:

ComfortGuard material exhibits no dimensional changes when subjected to AATCC 135 Dimensional Stability Test per American Association of Textile Chemists and Colorists.

#### LAUNDERING:

Wash in standard institutional laundry. Tolerates high temperatures and harsh detergents, but for best longevity avoid chlorine bleach and overly hot dryers.

#### WARRANTY:

ComfortGuard products carry a lifetime guarantee against defects in material and workmanship. Because of varying conditions of use and care, we are not able to warranty these products against normal wear and tear or usage.

#### COMPANY:

ServoVita, Inc.  
PO Box 14099  
Fremont, CA 94539  
TEL: 1-800-506-0992  
FAX: 1-510-698-6298

California Certified Small Business  
Woman Owned Business

ComfortGuard products are all made in the United States of America.

#### DESIGN:

Fully opening front and shoulder panels provide ability to apply the garment to fully restrained individuals.

High bulk material eliminated ability to knot or noose.

#### MATERIAL:

Patent-pending combination of industrial strength urethane backed high denier polyester exterior and heavy duty brushed cotton interior quilted together with industrial nylon thread in a cross stitch pattern for ultimate strength and durability.

#### CONSTRUCTION:

All pieces separately overlock stitched for added durability and strength. Short length Velcro closures reduce risk from removal of long size adjustment closure strips. High strength nylon thread used throughout.

#### SIZES:

MEDIUM: 46" girth - 46" length (women & teen)  
LARGE: 56" girth - 52" length (average men)  
X-LARGE: 70" girth - 54" length (large men)

#### COLOR AND OPTIONS:

Custom sizes available upon request.

Available in dark green and dark blue.

Velcro closure replacement kit is available.